

## AGENDA

### INVESTMENT COMMITTEE MEETING MARIN COUNTY EMPLOYEES' RETIREMENT ASSOCIATION

One McInnis Parkway, 1<sup>st</sup> Floor  
Retirement Board Chambers  
San Rafael, CA

November 4, 2010 - 9:00 A.M.

---

#### CALL TO ORDER

#### ROLL CALL

#### A. OPEN TIME FOR PUBLIC EXPRESSION

#### B. MANAGER ANNUAL REPORTS

1. Columbus Circle Investors – Small Cap
2. Abbot Capital – Private Equity
3. Clifton – Futures Overlay
4. Pathway Capital – Private Equity

#### C. INVESTMENT CONSULTANT QUARTERLY UPDATE

For period ending September 30, 2010

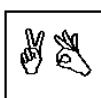
#### D. OLD BUSINESS

1. Update on AXA Rosenberg
2. Due Diligence Report – RCM
3. Due Diligence Report – AEW
4. Due Diligence Report – Numeric
5. Due Diligence Report – Pyramis
6. Due Diligence Report – State Street
7. Due Diligence Report – Wellington

#### E. NEW BUSINESS

1. Long-term Investment Performance Report – Callan Associates
2. Portable Alpha (market neutral) Strategies Discussion

**Note: Items designated for information are appropriate for Committee action if the Committee wishes to take action.**



Late agenda material can be inspected in the Retirement office between the hours of 8:00 a.m. and 5:00 p.m. The Retirement office is located at One McInnis Parkway, 1<sup>st</sup> Floor, San Rafael.

MCERA is committed to assuring that its public meetings are accessible to persons with disabilities. If you require American Sign Language interpreters, assistive listening devices or other accommodations to participate in this meeting, these may be requested by calling (415) 499-7331 (voice) or (415) 499-6172 (TTY) at least 72 hours in advance.

Copies of documents used in this meeting are available in accessible formats upon written request.  
The agenda is available on the Internet at <http://www.mcera.org>.